



St. Edmund's Church

£1.00

# News from the Parish

April 2024



[www.stedsandstmatts.co.uk](http://www.stedsandstmatts.co.uk)

[www.facebook.com/stedmundsalleestree](https://www.facebook.com/stedmundsalleestree)

## St. Edmund's - April 2024

**Mask wearing** is still **optional** in St Edmund's, as from the 1st of February 2023. However, we do ask you to stay away from church if you feel unwell. We recognise that some people still choose to wear a mask: if this applies to you, you are very welcome to continue to do so. The PCC also recognised that it is possible that the Covid/flu situation could deteriorate very quickly. Should this be the case, the Standing Committee will meet and decide whether mask-wearing, or other control measures, should be re-introduced.

For **communion**, the arrangements for going to and from the rail were relaxed from 1st February last year. However, please recognise people's need for space and try to avoid crowding others. As always, it's very much appreciated if you could follow any directions given by that day's welcomers!

You will be offered the bread and the wine. If you do not wish to drink from the chalice, then simply smile and shake your head and it will pass you by. If you wish your wafer to be intincted this is now possible thanks to Revd Rachael's special chalice, and you can let her know that this is what you prefer.

Coffee now takes place weekly (many thanks!) after the Sunday morning service, in the Church Hall, the other side of the Red Cow.

FOOD BANK - The first Sunday of the month, 7th April 2024. Please leave items in Primrose's Bookshed, the Vicarage, by the following Monday pm or bring to the Sunday 10.00am service.

---

FRONT COVER: Beavers group in St Edmund's listening to Revd Rachael: Article on page 17 inside.

BACK COVER: Photos show the event in which there was a collaboration between the Voices Ensemble led by Ann and Dan Miller, and our Handbell ringers: Article starts on page 19 inside

Can you support St Edmund's by sponsoring the colour cover in memory of a loved one or to celebrate an event? Please contact any of the editorial team or Church Warden if you are interested. The cost is £35.00.

---

## Planning a Church, Community or Charity Event?

We would be delighted to receive information regarding events taking place in our parish. Email text/photos to [steds.stmatts@outlook.com](mailto:steds.stmatts@outlook.com) and/or [fiona.fraser@burnsgraphics.co.uk](mailto:fiona.fraser@burnsgraphics.co.uk) by the 15<sup>th</sup> of a month to be in the next issue. Our Parish magazines are also on our website:- [www.stedsandstmatts.co.uk](http://www.stedsandstmatts.co.uk).

## Reverend's Letter

I love the promise that snowdrops, crocuses and then daffodils bring earlier in the year, and this year being unseasonably warm for so much of winter we've also seen many other plants flowering earlier than normal. But April is when everything really gets going. As if nature itself is rejoicing with us that another winter is over and better weather, more amenable to getting outside is here!

Andrew and I tend to spend my days off getting out into green space for walks whatever the weather and temperature – there is no bad weather, only inadequate choices of clothing. But it's so much better when there's sun and warmth. We tend to go to the same places and it's fascinating to watch the changes in the shrubs and hedgerows, and the kitchen garden at Calke Abbey, as the year progresses. And at this time of year the difference from one week to the next is astonishing. Suddenly it feels like nature is on steroids as our flora rejoices in the warmth and wet by coming out to play.

In our churches we have travelled through Lent together. We have been remembering how far short we fall as we consider Jesus' sacrifices and suffering for our sakes. We've invited the Holy Spirit to help us let go of our own plans and priorities and give them to God, who loves us and knows better than we do what we need. To help us obey as Jesus obeyed. It has been humbling but also releasing to be reminded that we are only human.

And now? Now we have arrived at Easter and can rejoice with all creation that Jesus who was dead is alive! He has conquered sin and death for us so we can truly live lives of freedom and love together. This is Good News! He is our living hope.

So, when we face the difficult things that crowd our lives, and there are so many – across our world as well as personally - we can face them knowing that Jesus is with us: seeing, knowing, and giving us strength to walk through each day with him if we will only invite him. With this perspective we can rejoice in all circumstances. Not pretending that life is peachy when it's terrible. But knowing that no matter what our circumstances, the bigger picture of Christ victorious and King means that eternity with him is ours. This is a message our suffering world needs to hear and to experience. Let's resolve to pray more fervently that his Kingdom will fully come and his will be done, and be prepared to be the answer to our own prayers.

*Revd Rachael Brooks, Associate Minister, St Edmund's*

PS, I must mention how good it was to work with the team putting a session on for the Beavers. Each person took their allotted task and ran with it, using their gifts and skills, and it was greatly appreciated by the Beavers. The team was made up from St Edmund's and included John, Geoff, Cyra, Jane, Louise, David and Andrew. Thanks to all of them.

# Churchwarden's View: A Regular Update by Paul Smith

**We now have a date for our Annual Parish Meeting – it's Sunday April 28th, with the meeting taking place as usual in the hall after the 1000 service.**

Last year's was exceptionally well-attended, possibly because of the excellent cake served! Seriously, though, the meeting is a key opportunity to come together to celebrate the life of our church. We'll hear reports from the many who run church organisations formal and informal, appoint new members to our PCC (Parochial Church Council) and, with God's blessing, appoint two church wardens.

As you may be aware, I have been sole warden for two years now. I am willing to stand for a further 12 months, but I do then plan to step down. I have had enormous support from many people, but we need to remember that there should be two of us! My own experience is that it takes at least a year to fully grasp what the role entails, so it really is essential that we now get at least one other person on board, otherwise whoever takes over in 2025 is going to have a very tough job indeed.

The official word from the C of E on the number of wardens is the Churchwarden's Measure 2001. It reads:

*The basic number of churchwardens is two for each parish. [...] This is because the office is an onerous and time-consuming one, and a single churchwarden acting alone can be placed under an unreasonable burden. It is also unsatisfactory for the parish to be left without cover if a single churchwarden is unable to carry out his or her duties for a time, for example because of illness or unavoidable absence.*

Having two wardens allows each to support the other, and makes a lot of sense where there are two buildings to manage, as is our case with having both the church and the church hall.

**So together we must find at least one other person who is willing to stand for appointment as churchwarden at the meeting later this month. Could I ask you therefore:**

1. Please consider if you could fill this role. Or, if you know someone you think would make a good warden, do encourage them to step forward.
2. We currently have vacancies on the PCC and more will arise as members stand down at the annual meeting. So again, please consider if you would be willing to stand, or you know someone else who would make a good PCC member.
3. Matt Cooper is currently updating our electoral roll. Please help him by making sure you are on it (you can't vote at the meeting unless you are) and that we hold your correct details.

If you are interested in any of these opportunities, the next step would be to speak to

Rachael, me or any other PCC member (this would be on a no-obligation basis!) so that you can find out more about what is involved. These roles play a vital part in managing our church's strategic direction, as well as its day-to-day running. Having the right people in post also means we can fully support our new clergy, as I hope and pray we all wish to do.

Paul Smith  
Churchwarden

**Try my quick corny quiz – no prizes! What's missing?  
VOL\_NTEER FOR O\_R S\_CCESS**

---

## A short history of Churchwardens

Churchwardens appear in parish records from around the 13th century. The appointment of churchwardens was required by an edict of the Council of London (1127); and in the Rolls of Parliament (1341) they were described as "wardens of the goods of the church". The constitution of Robert Winchelsey (Archbishop of Canterbury 1295-1313) specified the furnishings that the parishioners were required to provide in a parish church for the conduct of worship. Compliance with these requirements was to be the responsibility of the churchwardens. Another duty was to present moral delinquents to the ecclesiastical courts.

By the mid-14th, they can be seen as elected by and from among the parishioners, as representing the laity and taking responsibility for the church fabric - including the funding and maintenance of church lighting (candles / windows) The records indicate that not all churchwardens were male. More can be learnt about the role of churchwardens over the 14th and 15th centuries, including during the Reformation, as about 200 detailed books of churchwardens' accounts from the Tudor period still exist. Churchwardens were responsible for ensuring compliance with the latest government measures, e.g. moving the altar from the east end under Edward VI, and moving it back under Mary.

Their office appears to have been simply subsumed in these various phases of change in church order. By the time of the plague in 1665 and the Great Fire of London in 1666, they have a very high profile in "parish management".

In the medieval Church, all parishioners were involved in the election of churchwardens. The custom that one was appointed by the incumbent and the other by the parish had its origin in the 1571 canon.

The law on churchwardens was brought together in written form in the 1964 Churchwardens (Appointment and Resignation) Measure, replaced in 2001 by the Churchwardens Measure.

© Don Redman, *The Church Times*

# From the Registers of St Edmund's Church

## WEDDINGS

4th April - Wedding of Daniel Wibberley & Rebecca Edwards



The wedding of Christopher Pegg & Charlotte Marcer took place on 17th February and was mentioned in the Registers' List of the March magazine. They have kindly sent us a photo of their special day.

We welcome photos of weddings and baptisms at St Edmund's, please email to [steds.stmatts@outlook.com](mailto:steds.stmatts@outlook.com)

## FUNERALS at St Edmund's

5th April - Funeral of Stephen Wrenn

## BURIAL OF ASHES at St Edmund's

7th March - Burial of ashes of Christine Bird

2nd April - Burial of ashes of Sheila Starling

14th April - Burial of ashes of Gordan Cant

## Repair Café open on Saturday 6<sup>th</sup> April

The volunteer-run Derby Repair Cafe is held in the West End Community Centre, Mackworth Road, DE22 3BL once a month. It is next open on Saturday 6th April. Bring your household items for repair by our volunteer repairers for a small donation whilst you sit back and have a cup of tea. There'll be the usual volunteers to help with household items, sewing repairs and mending jewelry. Last repairs taken at 3.30pm. Don't forget that we can only take cash for donations and refreshments. Full details can be found on the Repair Café Facebook page.

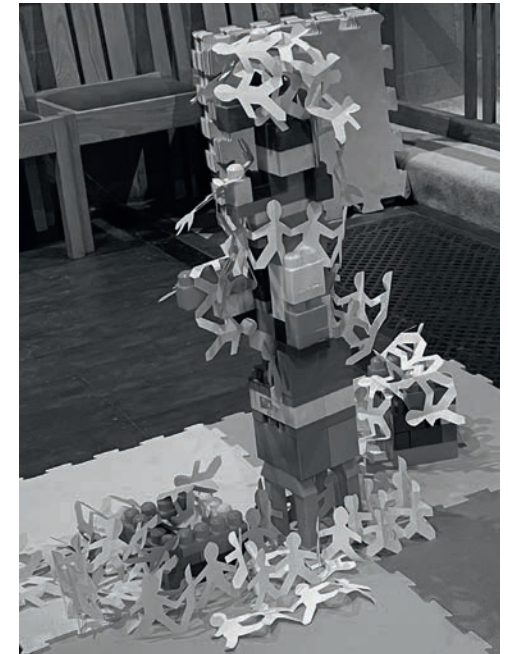
**IF YOU CAN'T FIX IT, YOU DON'T OWN IT.**

# Mothering Sunday Service

A large congregation enjoyed a very happy Mothering Sunday Communion service, on 10th March, cutting out people paper chains and placing them in a specially constructed house once they had received communion. The building of the house, using mega blocks, in the Lady Chapel was organised by Gwen (not yet 3!), ably assisted by Joseph with Chris Jack as the engineering advisor. The height came close to Tower of Babel proportions and remained intact throughout the service!

Many thanks to Michèle and her team who provide beautiful posies for all to take away after the service – and there were enough for the Evensong congregation as well.

*Elizabeth Jack*



## Sunday services at St Edmund's in April



<b>Sunday 7th</b>	10am	Morning Prayer
<b>Sunday 14th</b>	10am	Holy Communion
	6pm	Choral Evensong
<b>Sunday 21st</b>	10am	Morning Prayer
<b>Sunday 28th</b>	10am	Holy Communion
	6pm	Choral Evensong

**All Welcome**



## Sunday services at St Matthew's in April



<b>Sunday 7th</b>	10am	Holy Communion
	6pm	Evensong
<b>Sunday 14th</b>	10am	Morning Prayer
<b>Sunday 21st</b>	10am	Holy Communion
	6pm	Choral Evensong
<b>Sunday 28th</b>	10am	Morning Prayer

**All Welcome**

## Dates for your Diary - March / April 2024

### **Saturday 30 March**

9.30am - St Edmund's Groundforce meets - remember there is no April Groundforce

9.30am - St Matthew's Churchyard Working Party

### **Sunday 31 March - Easter Day**

10.00am - St Edmund's - Choral Communion led by Rachael Brooks

10.00am - St Matthew's - Choral Communion led by Matthew Trick

6.00pm - St Edmund's - Joint Choral Evensong led by Rachael Brooks

### **Tuesday 2 April**

11.00am - St Edmund's - Burial of Ashes of Sheila Starling

12.30pm - St Edmund's - Funeral of Neil Radford

2.00pm - St Matthew's Fellowship Room - FOSM - Potty Plotters  
by Elaine Crick and Julia Slater

### **Wednesday 3 April**

10.00am - St Edmund's - Holy Communion, led by Lee Martin

### **Thursday 4 April**

12 noon - St Edmund's - Wedding of Daniel Wibberley and Rebecca Edwards

### **Friday 5 April**

1.00pm - St Edmund's - Funeral of Stephen Wrenn

**Saturday 6 April** 9.30am - St Edmund's Church - Groundforce - CANCELLED

**Sunday 7 April - Food Bank Sunday** - please leave donations in St Edmund's Church or in St Matthew's Fellowship Room by Tuesday 9 April.

10.00am - St Edmund's - Morning Prayer led by John Rice

10.00am - St Matthew's - Holy Communion led by Dwayne Engh

6.00pm - St Matthew's - Evensong led by Clive Lemmon

### **Monday 8 April**

2.00pm - St Edmund's Choir Vestry - Bookworms: Vinegar Girl by Anne Tyler

7.30 pm - Community Room at Catherine McAuley House - Ascension Prayer Group

### **Tuesday 9 April**

12 noon - St Edmund's Church Hall - Luncheon Club

### **Wednesday 10 April**

10.00am - St Edmund's - Holy Communion, led by John Rice

### **Saturday 13 April**

9.30-12 noon - St Matthew's carpark - Refills on the Road

### **Sunday 14 April**

10.00am - St Edmund's - Holy Communion led by Rachael Brooks

10.00am - St Matthew's - Morning Prayer led by Melonie Hambly

11.30 am - St Edmund's - Burial of Ashes of Gordan Cant

6.00pm - St Edmund's - Choral Evensong led by Clive Lemmon

### **Wednesday 17 April:**

10.00am - St Edmund's - Holy Communion, led by Rachael Brooks

## Dates for your Diary - April 2024 continued

### **Thursday 18 April**

10.00am - St Edmund's Church Hall - Baby & Toddler Group

10.45am - Holy Communion to Stanley House

11.15am - Holy Communion to Abbeydale

### **Friday 19 April**

8.30-10.30am - St Matthew's Fellowship Room - Community Café

### **Sunday 21 April**

10.00am - St Edmund's - Morning Prayer led by John Rice

10.00am - St Matthew's - Holy Communion led by Rachael Brooks

St Matthew's APCM after the 10 am service

6.00pm - St Matthew's - Choral Evensong led by Melonie Hambly

### **Tuesday 23 April**

12 noon - St Edmund's Church Hall - Luncheon Club

### **Wednesday 24 April**

10 am - St Edmund's - Holy Communion, led by John Rice

### **Thursday 25 April**

10.00am - St Edmund's Church Hall - Baby & Toddler Group

### **Saturday 27 April**

9.30-12 noon - St Matthew's carpark - Refills on the Road

9.30am - St Matthew's - Churchyard Working Party

### **Sunday 28 April**

10.00am - St Edmund's - Holy Communion led by Rachael Brooks

10.00am - St Matthew's - Morning Prayer led by Clive Lemmon

St Edmund's APCM after the 10 am service

6.00pm - St Edmund's - Choral Evensong led by Clive Lemmon

PLEASE CONTACT the Parish Administrator, Caroline Audley, with details of your future events for them to be included in the Diary Dates:- email: Steds.stmatts@outlook.com or telephone her on 552031.

Office opening hours:- Monday, Tuesday & Friday: 9.30am - 12.30pm

Wednesday: 9.30am - 3.00pm Thursday: 11.30am - 3.00pm

If out of hours please leave a message; the answer phone is checked daily.

---

## Allestree History Group Meetings April 2024

Meets at 7.00pm (Wednesday's) in the Choir Vestry at St Nicholas' Church, Allestree Lane, Allestree, Derby. Visitors welcome at £4.00 pp.

3rd April: " Women's Art" by Maggie Slingsbury.

17th April: Members mini talks.

Enquiries to Katherine on 07500704520. Website:- allestreelocalhistorygroup.org.uk

## Up to date news about Peter and Julie

This “update” from Peter and Julie has come via an email to Claire (Pegg). Claire wrote to them with details of Chris and Charlie’s wedding (photo elsewhere in the magazine).

Written on the 3rd March:

“It’s a cold clear day up here. Julie has been into the Abbey, and will be going back shortly for a welcoming stint. The Vicar has returned from 3 weeks in New Zealand, so order is restored. The Curate is off on retreat this week.” Peter has taken to his comfy chair to listen to the radio.



“I’ve had 3 doses of chemo since the new year. It’s funny being one of half a dozen people in the Unit rather than the crowds at the Christie. Blood test on Monday, 3 hours of chemo on Tuesday, back on Thursday for removal of slow-release bottle – I’ve also had a blood transport on two of the Thursdays. I’ve not had any horrendous reactions, though it is a cocktail of interesting drugs. (The main reaction is to cold – you have to wear gloves before attacking the freezer; getting cold, wet washing out of the machine means very tingly fingers; if you breathe in cold air your larynx can go into spasm – a warm blanket round the throat sorts it, but it is frightening when it happens. I should have had chemo last week but got a DV bug which put a stop to that. I was pretty grot Sunday to Wednesday, thought I was better then ended up back in bed early last night. Felt better yesterday, though everything was taking an age – by the time I got up, showered and dressed this morning it was afternoon!

My main problem is tiredness, but one good thing is that Hannah’s old powerchair (which she called Merida) is now refurbished so I can use it. Julie and I went into Hexham together on Thursday morning. We had a ride around the crocuses in Sele Park then coffee in the Abbey Cafe garden.

I had a CT scan a fortnight ago and will talk to the Newcastle and Manchester Consultants on the 6th March to find out what it said. I’d love to think this chemo is doing some good, but I’m rather worried what it will show – O well, no use worrying.

Harry and Sarah are doing fine. He gets over at least once a week and he is a very useful engine (as the Fat Controller would say). When I was having a grotty day on Monday he came over and worked from here. It was good to have him here. Hannah is celebrating because she has qualified as a GP and has a 3-day-a-week job at the Student Health Centre in Leeds.

Julie is keeping busy. The Abbey is using her and supporting her, and she is really enjoying being able to get on her powerchair and pop into town. She is transferring her Reader Licence here. Michael Jackson, my predecessor at Ponteland, is one of the retired clergy linked to the Abbey, and he came to bring communion last week.

Love to all - Peter “

Important PS.

A subsequent message (posted on facebook I believe) tells us that at his meeting with his Consultants on March 6th Peter learned that his situation is “stable” at the moment.

*Chris Willis*

---

## Next Big Book Sale - 11th May

As soon as the new year arrived, I started to have people asking me when the next big book sale would be! All the rain we had held up my sorting of the book shed but then I made some progress and decided on a date. It will be May 11th in the church hall, as usual, and at the usual time of 11am until 1pm. Refreshments will be available.

I look forward to welcoming Rachael to her first experience of our book sales. I am hoping there will be the usual large choice of very good quality books but I do need more donations. I will leave the red box at the back of church for you to leave books in. If you have too many to bring to church, do give me a ring and I will be happy to pick them up. **PLEASE DO NOT LEAVE BOOKS IN THE BOOK SHED.** I live in locally and would be happy to receive any books at my home.

The sale couldn’t be on May 18th, just in case The Rams are involved in the play off finals. The hall was booked for another date I asked about. So, I was very concerned when I discovered that four of my most stalwart helpers won’t be available on the weekend of 11th. I will be desperate for help on the evening of 10th to shift boxes from the book shed to the church hall. I will also need help on the day of the sale. All helpers get first choice of the books! If you can help or know anyone else who could, please can you let me know? It is also a great help if you can publicise our sale.

As well as supporting the church, I am hoping to be able to make a contribution to The Red Cross. It would be nice to think we could help, in a small way, those who are suffering in the terrible things that are happening in the world at the moment. I hope to see you on May 11th.

*Diane Bakhda*  
01332 831897

## Recipe: Fruity chicken curry

**Fruity chicken curry. Serves 3 to 4. A very popular family meal.**

### Ingredients:

2 ozs/50gms butter or oil	1/2 /275ml pint milk
2 onions chopped	1/4 /150ml pint chicken stock
1 cooking apple	1 level tbsp mango chutney
1 oz/25gms flour	Salt & pepper
1 rounded dstspn hot curry powder	12 ozs cooked chicken breast
1 rounded dstspn mild curry powder	Handful sultanas
1/2 tsp ground ginger	Few chopped dried apricots.
1/2 tsp ground cinnamon	

### Method:

Melt butter or oil in large pan or wok.  
Fry onion & apple till soft.  
Add flour, curry powder, ginger & cinnamon.  
Cook gently for few minutes before blending  
In milk & stock.  
Stir in chutney, salt & pepper, chicken & dried fruit.  
Bring to boil & simmer gently for 20 mins (keep stirring)  
Serve with 6 -8 ozs/ 175 - 225 gms plain boiled rice, sliced banana & a few orange segments.

This is the basic recipe, any of the ingredients can be altered to suit, amount or different ,e.g. when family were here they put less curry powder in, more dried fruit, & even some cashew nuts!  
Also I like using fresh chicken breasts, cut into bite size pieces, & fried with the onion & apple at the start. Enjoy.

*Rita Wrigley*  
26 March 2024

If anyone has a favourite recipe for others to try, please let Fiona or Chris know - email details in directory on page 31.



## Remembering Keith Yarnell

It is with great sadness that I inform you of the passing of my dear husband Keith Yarnell on the 12th March. We have been members of St Edmund's congregation for over fifty years until we moved to Lichfield to be nearer to our daughter Elizabeth.

Keith was a Crucifer and Server for many years, duties that meant much to him. Please remember Keith and our family in your thoughts and prayers.

Thank you,

*Jane Yarnell*



## Allestree Flower Group 16<sup>th</sup> April

Allestree Flower Group holds its AGM for members only at this meeting. Venue at the Evergreen Hall, Cornhill, Allestree at 7.00pm for 7.30pm on Tuesday 16th April.

Agenda: AGM, Quiz and Fizz.

Admission: Free - Members only

For further details telephone 01332 558540



## Allestree W.I. Meeting 23<sup>th</sup> April

Allestree W.I. will meet on Tuesday, 23 April at 2.00pm at Woodlands Evangelical Church, Blenheim Drive, Allestree, Derby. DE22 2GP  
This Meeting is the AGM. Mrs Nancy Hawkesworth, W.I. Advisor will attend and will present the cup to the Competition Winner.

The Competition is A Dragon in any medium.

Visitors Welcome £4.00pp.

Enquiries to Mavis on 01332 556012.

### ALLESTREE LUNCHEON CLUB

**GREAT FOOD • INTERESTING & LOVELY PEOPLE**

**Takes place every 2nd week- Look at Diary Dates pages**

**If you'd like to join us for a meal or would like to help prepare & serve, to eat later, please ring Anne Madge, 07971 680377**

## More Derbyshire Walks (44)

### ALFRETON PARK AND SHIRLAND

Who would have thought of a country walk from Alfreton? But then why not – because the old parkland, although close to the town, is like a different world, quite rural and peaceful. In a gently undulating walk of 5 miles described below, we cross the historic park into the adjacent one of Shirland, then across a landscaped Golf Course converted from old mining territory, returning via the interesting hamlet of Toadhole Furnace in the Amber Valley.

**Alfreton Park** was originally one of Derbyshire's many Medieval Deer Parks, of which the present park is but a small section. Although the boundaries are not now so well defined, it is believed to have existed north of the A615 up to Alfreton Brook (where it adjoined Shirland Park) and west of the Chesterfield road. The area is still essentially of fields and woodland, drained by Alfreton Brook which flows west to join the River Amber.

On the southern part of the estate lies **Alfreton Hall**, a Georgian Country House built in 1725 by the Morewood family of the local mining industry. After the last descendant died it was bought by Derbyshire County Council in 1963 and then, under Alfreton UDC, the much smaller estate was made into a public park with various sports facilities, including conversion of the Hall's lake into a swimming pool and lido. In 2006 it was sold to a Social Enterprise Company who restored the deteriorated but listed Hall and converted it to the present conference and wedding venue. The estate also now includes community buildings such as a Special Needs School, Adult Training and Medical Centre.

At the edge of the park is **St. Martin of Tours Church**, which dates from the 13thc with later alterations, of which the oldest portion is the arch between tower and nave. Its name relates to Martin, Bishop of Tours in the 4th century, who was later declared a patron saint of France. He grew up in Italy, joined the Roman cavalry, then converted to Christianity and became a missionary, going on to establish the Abbey of Marmoutier outside the French city of Tours.



St. Martin of Tours, Alfreton



Alfreton Hall

## More Derbyshire Walks (44) continued

### ALFRETON PARK AND SHIRLAND continued

**Shirland** was recorded in the Domesday Book as a manor given to William de Peveral after the Norman Conquest. A Deer Park was created, considerably larger than that of Alfreton, which extended both sides of today's A61; but over the years much of it was changed by mining, especially on the western side. Shirland Pit, which employed around 500 locals, closed in 1965 after 100 years operation and the present Golf Course was constructed on the site of the colliery's former slag heaps. The pit was served by a tightly-curved branch line from the Midland Railway via a tunnel under the B6013 near Toadhole Furnace. The parish Church of St. Leonard, mainly of 15thc. construction but dating from 200 years earlier, is situated on the A61 opposite the informative Miners' Memorial on Shirland village green.

**Toadhole Furnace** is situated on the B6013 close to the River Amber and on the line of the ancient Roman Ryknield Street; it takes its name from the site of an old iron furnace which operated between early 17th and late 18th centuries. The word 'toadhole' probably refers to a former foxes 'earth' (ref. 'tod' in old Scottish & N.

English dialect). Other local industries included **Amber Mill** for corn grinding and cotton spinning and the old Mustard Mill, built in 1817. After a fire in 1955 the Mustard Mill was gradually renovated with new roofing, now known as Amber House Enterprise Centre, with a modern Furniture Retail business; and Amber Mill houses the Royce Wood Pottery & Ceramic Art Studio. It was at Amber Mill that the famous Victorian engineer Sir Joseph Whitworth of Darley Dale started as a young apprentice, and where his interest in the working of the mill's machinery led him on to a great career and national fame.



Amber Mill, Toadhole Furnace



St. Leonard's Church, Shirland

**The Route** starts from Alfreton Park entrance drive (1st R off the A615 from the A61) with parking next to the cricket ground. Follow the drive R, L & R passing in turn Parkwood Day Centre, Alfreton Hall & Polygon Centre, then sharp L on Church Street to St. Martin's Church. Follow the paved f/p through the attractive churchyard



## More Derbyshire Walks (44) *continued*

### ALFRETON PARK AND SHIRLAND *continued*

#### The Route *ontinued*:

The f/p descends between Pond Wood & Wren Wood towards Alfreton Brook, swings L, then a bridge R across the brook (400569) and along field edges, rising to Lower Delves Farm. Follow the farm drive N past Upper Delves Farm (with Golf Course seen L) towards Shirland, but when the drive swings L, cross a stile and continue ahead on a field f/p, reaching the A61 at Manor Farm just before Shirland Church and the village green (with a good seat for your coffee break).

From the green follow Hallfieldgate Lane briefly, turn L a short way on Pit Lane, then R at a small gate in the hedge (399583) leading into the golf course. With the public f/p denoted by arrowed posts, go initially forward, L along an avenue of trees, then R & L along the far side of the course, following Shirland Brook SW. Just before reaching Hole 13, cross a small bridge over the brook (392573) and take a rising field-edge f/p R up to the B6013. Turn L down the road to Toadhole Furnace and the Amber Hotel village green (Amber Mill and river are a short detour R). Continue on the B6013 and take a f/p L just past Brook Farm, rising SE across the 1st field (or around edge if crops high) and along field edges to Ufton Fields Farm. Follow the f/p curving SSE (Church & Hall seen to the L) and head just R of a square-shaped copse (399558) to a crossing track and turn L here. This heads back to the churchyard and follows the initial part of the walk. It is a pity that there is no legitimate way of turning R from the track directly into the present Park's area; but to add some variety, from just past the Hall you can follow a pleasant track R through the Park's woodland, which curves back to the top of the entrance drive and cricket ground.



Alfreton Brook (old boundary)



Alfreton Parkland & Amber Valley

## The Beavers have returned!

We were delighted to host a visit of more Beavers from the Mohawk Beaver Colony of the 73rd Derby (Allestree) Scout Group on the evening of Thursday 21st March. In all, about 22 came this time with their leaders and we found that some of them had enjoyed their visit in November so much they came back for a second tour. John Rice took the opportunity to quiz them as to what they remembered from last time and we were pleasantly surprised that they had taken in and remembered so much, although clearly the points of the compass continue to mystify!

A charming, filmed presentation of the Easter story in Lego models was followed by a quick-turnaround programme of activities in small groups including crafting paper butterflies (an example of transformation) and sandpaper crosses (the rough side representing the difficult themes of Lent and Easter) cut into jigsaw pieces requiring patience to make sense of what at first is puzzling. Meanwhile other groups climbed and counted the spiral stairs – expressing both their excitement and fears of exploring and of being at an unusually great height – to view and count the slow ticks of the clock's huge pendulum. They discovered the ticks soon add up to enormous numbers, more than three billion of them having sounded since the clock started running after Whitehurst made it 1853. In the Kim's Game group, led by Andrew Brooks, the challenges were not only to remember the Easter-themed items, but to identify the one that had been secretly taken away. Successive groups of Beavers were able to experience at close quarters the music and power of the pipe organ as David Redfern demonstrated the vast range of effects it can produce. Some musical Beavers were able to play it themselves.

At the end of the evening, we all came together for a catchy Easter song with actions, accompanied by David and a quiet prayer before the church was filled by the lively chatter of children as they left.

With thanks to Revs Rachael and John for explaining things to us, to Cyra and Jane for taking charge of the craft work, to John and Louise for serving refreshments, to Geoff for getting us up and down the tower, to David for his musical expertise and to Andrew for his challenging game. We hope to see some Beavers soon at our services and, if there are enough, to share their song with us and our worship with them.



## Book Review

### “THE TREASURES OF ENGLISH CHURCHES – WITNESSES TO THE HISTORY OF A NATION”

by Matthew Byrne

Pub hardback by Shire Publications  
(Bloomsbury Publishing), 2021

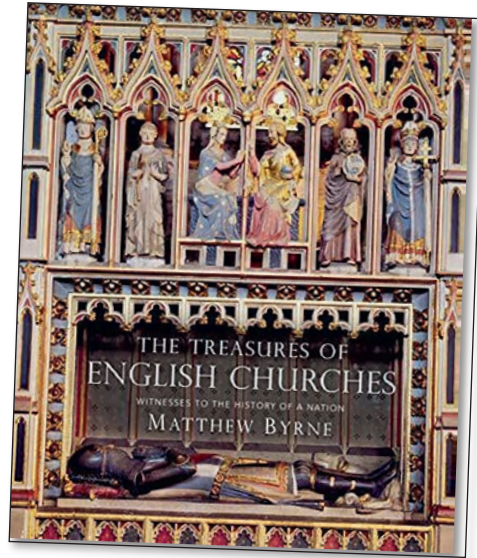
ISBN 978-1-78442-489-3

(Also available in e-book format)

If we are honest and acknowledge the realities of declining congregations and sometimes impossible budgets for (for example) heating a historic church, it follows as night follows day that we need our National Churches Trust (NCT) more than ever before. So it is timely to see this book appear: it's effectively a shop-window for the work of that charity – formerly named the Historic Churches Preservation Trust, which handed over its work and assets to NCT in 2007.

Of course some of the churches photographed in this volume are, happily, open and in active use for regular worship. These include thriving Cathedrals, Minsters and Parish Churches, not least in Derbyshire, with Ashbourne and Wirksworth just two instances shown. But a proportion of these places are either partly or permanently closed, and in real need of the NCT's work to keep them safe, secure and at their cleanest and artistic best – ready for those rare moments when opening can be arranged, and the beautiful buildings and all they hold appreciated.

The book is admirably well arranged in terms of historic eras, and to some extent geography, with, for instance, a special chapter on the extraordinary stained-glass project at Canterbury Cathedral undertaken by the Normans under Abbot Suger from about 1180-1220. Sections include decorations, furniture and styles of the Anglo-Saxon, Norman, Mediaeval, Jacobean and Victorian periods. There is also a wonderful late chapter called “Curiosities: Oddities and Bygones”, and, movingly, another one entitled “The Nation Remembers The Wars”. This last may be of great interest to anyone researching family history, whether or not their own. It includes not just the obvious World conflicts, but also the earlier Boer Wars.



## Book Review continued

Matthew Byrne is a gifted and experienced photographer, and page after page of this work is of breathtaking beauty and interest. The full-colour pictures could not be better-arranged, or, importantly, better-lit from the most rewarding angle. Rightly, text is relatively brief and sometimes confined just to captions, but where the period demands it there is a useful account of that particular time in history, the political, artistic and social influences, and any other relevant context. Byrne has done an outstanding job.

The only major disadvantage of this valuable book is a physical one, and that is its sheer size – not easy to carry about. But it lives up to the “treasures” of the title well. In a way, the final chapter is the most encouraging one, showing modern art of the Postwar period, including in Chichester, Canterbury and Durham Cathedrals as well as several smaller churches. Many of these artists in tapestry or glass are still alive and contributing art, or at least able to explain it, now. But even where they have long passed on, their work is just as inspiring as that in the foregoing chapters. Recommended, whether for browsing or for a longer continuous read.

*Kate Smith*

*Late February 2024*

---

## Spring – Ring – Sing

This delightful concert took place at the Church Hall in the afternoon of Sunday 17th March, a collaboration between the Voices Ensemble led by Ann and Dan Miller, and our Handbell ringers led by Bryan Clarke. It was a true celebration of Spring both from its timing and the programme content. There was a good audience of about 60 people who were treated to an afternoon of most beautiful music.

Most of the presentation alternated between the Handbells and Voices, but there were two items in which they all performed together, Schubert's Cradle Song beautifully sung in German, and an arrangement by Ann and Bryan of Cockles and Mussels. The programme ranged from the grace and beauty of early Church music, through folksongs and showbiz to the thought-provoking 'protest' songs of the early 1970's, and was also devoted to the celebration of music from one end of the British Isles to the other.

The Ringers began their concert with Fanfare for Spring especially written for handbells by John Mitchell, and carried on to include Shepherds Hey, Hot Cross Buns, Yorkshire Bells, Ye Banks and Braes, The Ash Grove, Cockles and Mussels and Gypsy Rover.


Continued on Back Cover

# Community Pop-in Café

Coffee Tea Toast

**Fellowship Room  
St Matthew's Church  
Darley Abbey  
Friday 19<sup>th</sup> April 2024  
8.30 - 10.30am**

All welcome  
Share time with friends

 **St Matthew DARLEY ABBEY** The Parishes of St Edmund, Allestree and St Matthew, Darley Abbey 



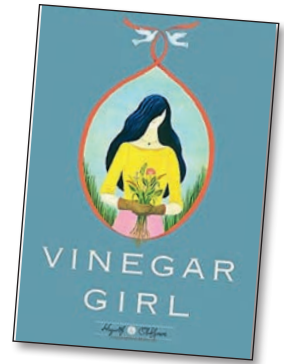
We collect for the Hope Centre on the **first** Sunday of **every** month. Donations can be left in St Edmund's Church or the book shed at The Vicarage.  
Thank you

## Bookworms 8th April Meeting and Reading List for 2024

We are meeting in St Edmund's choir vestry at **2.00pm** on **Monday 8th April** to discuss "Vinegar Girl" by Anne Tyler. For further details please ring or text Cyra Buxton on 07719776501 or email her on cyrabuxton@gmail.com.

Below is the list of books to be looked at from April to October 2024:

8th April	Vinegar Girl, by Anne Tyler
13th May	The Island of Missing Trees, by Elif Shallak
10th June	The Railway Girls, by Maisie Thomas
8th July	The Winter Garden, by Kristin Hannah
12th August	Normal People, by Sally Rooney
9th September	Olive Kitteridge, by Elizabeth Strout
14th October	84 Charing Cross Road, by Helene Hanff



## J BARLOW & FAMILY

Funeral Service

A truly independent, award winning, family-run funeral directors committed to providing you with the highest level of service.

Our commitment is to you and your family by providing a personal service in your hour of need. Together we will provide a professional and dignified funeral service that will also be unique and personal and we will guide you every step of the way. We will listen carefully to your family wishes and offer a complete choice and flexibility in the arrangements.



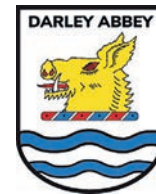
Direct cremation Bespoke Funerals Pre-paid Celebration of life

Here for you every step of the way

**01332 409182**

41 Park Farm Centre  
Park Farm Drive  
Allestree

[www.ibarlowfuneralservice.co.uk](http://www.ibarlowfuneralservice.co.uk)



## 63rd Derby Scout Group: White Peak Malt Whisky Tasting to celebrate St George's Night - Saturday 27th April

Our next Malt Whisky Tasting is to celebrate St George's Night and will showcase English Malts from Derbyshire's very own White Peak Distillery. Also included are your own bottle of Spring water and cheese and biscuits as a palate cleanser. NEW! This year we are offering a limited number of driver's tickets – these will include soft or hot drinks (instead of whisky) and cheese and biscuits.

The tasting is being held at Darley Abbey Scouts Hall, The Hill (off New Road), DE22 1DT. Doors open 7pm for a 7.30pm start. If you want to sit together as a group please let us know in advance.

Tickets £20 (Driver's ticket £10), in advance and strictly adults only, available from Darley Abbey Stores/ by e-mail from [63rdderbyscouts.tickets@gmail.com](mailto:63rdderbyscouts.tickets@gmail.com) or text Sue on 07925 633877.

All proceeds help to save the Scouts Hall.





**GREEN & COSY**

H O M E S

## Loft Insulation

We have recently completed the Loft Insulation work at St Edmunds Church Hall

Based in Beeston, we install Loft/Roof Insulation and External/Internal Wall Insulation across Nottingham and Derby

Call Chris to arrange a free, no obligation quote. No pushy sales people, just an efficient and friendly service



**0115 9224831**

**www.greenandcosy.co.uk**

## Help to Choose St Edmund's Charities in 2024

Dear all,

St Edmund's Church Parochial Church Council (PCC) had asked you all for charity nominations in 2023, and as a result funded seven charitable causes during the year based on your proposals.

Now the PCC is looking for appropriate charities to support in 2024, but we need your best ideas please. You can nominate charities covering mission, children's charities, education, training, community, medical charities, etc., and your input can be for an overseas, national or local charity.

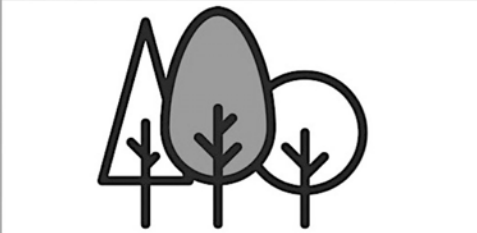
**Please submit your nomination and why it should be supported on the attached form by Sunday 7th April 2024**, either by email to me at [markhalliwell10@gmail.com](mailto:markhalliwell10@gmail.com), or by putting in the 'H' pigeon hole at the back of church addressed to me. Thank you for your support - we'll look forward to your inputs!

Best wishes,

*Mark Halliwell*, on behalf of St Edmund's PCC

Detach Here

Your name:
Phone number or email contact:
Full Name of nominated Charity:
Purpose of Charity:
Why you believe St Edmund's should support this charity. Also please state any specific objective or project within the charity that the money should be used for, and any donation amount requirement.
Return form to: <b>Mark Halliwell, St Edmunds Church Allestree</b>



Amber Valley  
TREE CARE LTD  
*Qualified Tree Surgeons*



**07380112079 / 07738366604**

Contact Christopher Byron or Whitney

✉ [ambervalleytreecare@gmail.com](mailto:ambervalleytreecare@gmail.com)

f Amber Valley Tree Care

## Holbrook Hall

Private Residential Home for the Elderly

Holbrook Hall conforms to the highest standards of safety and comfort and has a well deserved reputation for its superb level of care and cuisine.

Short and long-stay residents welcome.

For further information  
please telephone (01332) 880698  
or visit our website: [www.holbrookhall.co.uk](http://www.holbrookhall.co.uk)

Holbrook Hall, Holbrook, Derbyshire DE56 0TF



Diocese of Derby  
April 2024 message

Archdeacon Matthew writes...



'It was horrible', has been my stock answer to anyone asking a question about my night sleeping rough as part of the annual YMCA Sleepeasy event. Which is not to say that the company and mutual support of the 91 people gathered (which from 'Team Derby Diocese' included myself, my eight-year-old daughter, the Bishop of Derby and her son, and Revd Michael Futers from the Cathedral) was not supportive. But let's not kid about, a night away from warm cosy beds, sleeping both on and under cardboard boxes in cold weather was not pleasant. And I was only sleeping rough for one night, in an organised event, a safe place, and with a security guard ensuring our safety.

At several points of an uncomfortable night, the recognition came that we were doing this for one night, there were many in communities across the diocese, especially our city and larger towns where people sleep rough or sofa-surf. Especially traumatising are the numbers of children in temporary accommodation for prolonged periods.

The biblical imperative of protecting the vulnerable and oppressed is strong and clear (*Proverbs 19:17, Lev 25:36, Matt 25:34ff*). The Gospel verse which comes to mind whenever I reflect on homelessness is Jesus' own assertion that animals have a home but that he [Jesus] has no accommodation (*Matt 8:20*). In fact, Jesus in the Gospels was dependent on the hospitality and welcome of others to meet his needs.

Housing Justice, a Christian charity advocating for safe and affordable housing provision for everyone,

refers to all having safe, affordable accommodation within a community where they can access work and alongside others in the community and flourish in their lives. The indignity of being homeless or in overcrowded temporary accommodation is an affront to the innate dignity we all share as children of God.

The Diocese of Derby is holding onto its vision of the Kingdom of God: Good News for all. The Bishop's Leadership Team have discerned four missional objectives to realise that vision. Challenging Injustice in our diocese is one of those core objectives and working, where possible, to develop safe, affordable, secure housing on available church land is one of the streams of work we will develop.

As of March 2023, in Derby there were: 8 - 12 people sleeping rough each night, there were 2,086 homeless applications for housing, and there were 20 families in B&Bs for over six weeks. All these figures were and are rising. All these figures relate to real people who bear the image of God. Those who slept out or raised funds for those sleeping out to raise awareness of homelessness raised a staggering £29,000 towards challenging the injustice of homelessness in our communities. Please do continue to pray and collaborate in the effort to ensure that everyone in our diocese has safe, affordable and secure accommodation for their household.

**The Ven. Matthew Trick**  
Archdeacon of Derby City and South Derbyshire

## ADVERTISE IN THIS MAGAZINE

If you are a local trader, or have an event to promote, why not place an advertisement in the St Edmund's Church magazine. It is an inexpensive way to reach the local population of Allestree and Darley Abbey.

Contact Caroline Audley, parish administrator on email  
Steds.stmatts@outlook.com  
for details on publication dates and cost.

## KEDLESTON VIEW Bed & Breakfast

576 Kedleston Road  
Allestree, Derby DE22 2NH  
Tel: 01332 559246  
email: info@kedlestonview.co.uk

**Luxury Bed and Breakfast accommodation overlooking Kedleston Hall Estate**

Ideal for visiting relatives, family parties and gatherings, weddings etc.  
Deluxe king size/family room, pretty twin room, stylish double and cosy single room

BOOK ONLINE OR CALL  
FOR MORE INFORMATION  
www.kedlestonview.co.uk

# A.W. LYMN

## The Family Funeral Service

Pre-arrange and Pre-plan for your perfect goodbye

- ✓ Reduce the worry for your loved ones
- ✓ Fix your funeral director's costs and make a contribution to third party costs
- ✓ Range of plans or personalise your own funeral
- ✓ Pay by monthly installments over 1, 2, 3, 4 or 5 years
- ✓ No medical checks and no upper age limit
- ✓ Plans can be transferred if you move terms & conditions apply

### Derby

Derwent House, Becket Street, DE1 1HT

01332 348 800

www.lymn.co.uk  /awlymn  /awlymn

### Littleover

Meek House, 521 Burton Road, DE23 6FT

01332 913 112

*"Our family serving your family since 1907"*

## Peak Oil

Local Family Supplier of:

**Heating Oil, Aga Oil  
and Farm Fuels**

We also stock:

- Fuchs Lubricants
- AdBlue
- Storage Tanks
- Fuel Additives
- Fuel Accessories



For an instant online quote visit:  
**WWW.PEAKOIL.CO.UK**

**Chesterfield:** 01246 450242 **Belper:** 01773 550400  
sales@peakoil.co.uk

## Richard Hill Interior/Exterior Decorator

City & Guilds advanced qualified  
with 30 years' experience  
Reasonable rates



For free estimate ring  
Richard on 01332 780907  
or 079220 90066 or email  
richard.dhill@hotmail.com

T R U S T E D T R A D E R

## 'Handmadebyhrs'

Hello! My name is Heather and I am a paediatric nurse. During covid I decided to become a little creative... making greeting cards using hama beads.

(I first fell in love with hama beads when working as a child minder and with the children at the hospital).

All my cards are unique and 'one of a kind'. I love using bright colours and different designs. My favourite theme is, of course, Christmas.

Most of my cards are ideal to frame and keep for ever, others will convert to a coaster.

You can find out more or make a purchase on  @handmadebyhrs or  Handmadebyhrs Also through etsy; search Handmadebyhrs



## STEVE FIXES COMPUTERS

**STEVE CAN FIX & SERVICE YOUR  
PC, LAPTOP, TABLET, PHONE**

\*Running slow? \*Stopped working? \*Can't get online? \* Issues with emails, broadband, printing, setting up, installing/using apps?

### DON'T PANIC!!

I'm in Belper and can come to you.  
All surrounding areas too!

### STEVE CAN GIVE YOU TUITION

\*Want to learn how to use or do something on your PC/ laptop?

\*Need help with your phone/ tablet/ iPad?

Plus:- Affordable WEBSITES created  
VIDEOS transferred to DVD

Call: **Steve Little** on **07947 868605**  
Email: [steve\\_little@hotmail.com](mailto:steve_little@hotmail.com)



## AMG WEALTH MANAGEMENT

- INHERITANCE TAX  
PLANNING
- RETIREMENT INCOME  
PLANNING
- LATER LIFE AND  
CARE FEES ADVICE
- INVESTMENT PLANNING

Tel: 01332 551155

Email: [info.amg@sjpp.co.uk](mailto:info.amg@sjpp.co.uk)

Web: [www.amgwealthmanagement.co.uk](http://www.amgwealthmanagement.co.uk)

Address: Park Farm Drive, Allestree, Derby DE22 2QP

## ALLESTREE SATELLITE AERIAL SERVICES

BASED IN ALLESTREE BUT COVERING ALL AREAS IN DERBY AND DERBYSHIRE

- Professional conscientious Engineer with over 25 years experience
- TV Aerial repairs and installations
- FREEVIEW wideband digital aerials
- FREESAT installations
- SKY installations, dish realignment and  
MAGIC EYE
- Additional points installed
- Telephone points installed



Call Paul today for a free estimate

TEL: 07985 405244

576 Kedleston Road, Allestree, Derby

ESTABLISHED 1864



**W. Jones & Son**  
**FUNERAL DIRECTORS**



**BRAILSFORD**

Tel. 01335 360319 day or night

**PREPAYMENT PLANS ARRANGED**

**KAREN CANEY FBIE; MEAE DipFD: JOHN CANEY: RAY JONES**

An independent family business



# BLAIR GRATTON ARCHITECTS

DESIGN • PLANNING • PROJECT MANAGEMENT



Would it be helpful to meet a local Architect to discuss ideas to improve your home?

Contact us to arrange a free, no obligation consultation at our office in central Derby.

[www.blairgratton-architects.co.uk](http://www.blairgratton-architects.co.uk)

✉ [info@blairgratton-architects.co.uk](mailto:info@blairgratton-architects.co.uk) ☎ 01332 340458

Find us at: 29 York Street  
Derby  
DE1 1FZ



Architects  
Registration  
Board

RIBA   
Architecture.com

## St. Edmund's Parish

Church Website: [stedsandstmatts.co.uk](http://stedsandstmatts.co.uk)

For all enquiries regarding weddings, baptisms, funerals and parish events contact the Parish Administrator, Caroline Audley: email: [Steds.stmatts@outlook.com](mailto:Steds.stmatts@outlook.com) / telephone 552031.

Office opening hours:- Monday, Tuesday & Friday: 9.30am – 12.30pm  
Wednesday: 9.30am – 3.00pm Thursday: 11.30am – 3.00pm

If out of hours please leave a message; the answer phone is checked daily.

In an emergency please contact the Churchwarden, Paul Smith, on 07792 569758.

### Directory

Associate Minister:	Revd Rachael Brooks: <a href="mailto:rev.rachaelbrooks@gmail.com">rev.rachaelbrooks@gmail.com</a>	07305 140573
Churchwarden:	Paul Smith	07792 569758
Parish Administrator:	Caroline Audley: <a href="mailto:Steds.stmatts@outlook.com">Steds.stmatts@outlook.com</a>	552031
Readers:	<i>Vacancies</i>	
Choir:	Elizabeth Jack	07779 255412
Treasurer/Gift Aid Sec.:	Chris Jack, 12 Regency Close, Littleover	07805 027515
PCC Correspondence Sec:	Thelma Thompson	551569
Electoral Roll:	Matt Cooper	07572 110185
Flower Group:	Rosemary Yates	552742
	Pam Highman	551636
	Michèle Aspinall	07773 784009
Luncheon Club:	Anne Madge	07971 680377
Baby and Toddler Group:	Caroline Audley: <a href="mailto:Steds.stmatts@outlook.com">Steds.stmatts@outlook.com</a>	552031
Parish Safeguarding Links	Madeleine Fullerton	554762
	Louise Whittaker	556455

---

Hall Bookings:	Caroline Audley - <a href="mailto:Steds.stmatts@outlook.com">Steds.stmatts@outlook.com</a>	552031
Handbells:	Gill Flatman	557028
St Edmunds Preschool CIC:	Becky Radford <a href="mailto:admin@stedmundspreschool.org">admin@stedmundspreschool.org</a> for enquiries	07934 380561
Brownies:	Alwyn Young	550255

---

St. Edmund's Parish Magazine Editorial Team: Chris Willis & Fiona Fraser.

Please EMAIL magazine articles and photos to both [fiona.fraser@burnsgraphics.co.uk](mailto:fiona.fraser@burnsgraphics.co.uk) and Chris Willis at [c.willis246@btinternet.com](mailto:c.willis246@btinternet.com)

Magazine Distribution: Chris Willis 558136

**Copy Deadlines: 15th April for May issue and 15th May for June issue.**

Our Parish magazines are available as printed copies in Church and digitally on the website:- [www.stedsandstmatts.co.uk](http://www.stedsandstmatts.co.uk).



# Spring – Ring – Sing

Voices Ensemble began their programme with Cesar Franck's Panis Angelicus and included Saint-Saens Ave Maria, John Rutter's The Lord Bless You and Keep You, some beautiful poetry set to music such as T. Westwood's The Lark's Grave set by C V Stanford and Veronica Mason's The Graceful Swaying Wattle set by Frank Bridge. They also sang "For Good" from the show Wicked and Ralph McTell's "Streets of London".



After the singing and ringing, there were delicious cakes, drinks, and time to talk. There was a raffle. Proceeds from this concert were given to the charity Children First Derby, and the amount raised for their benefit was £245.



This was a lovely afternoon of first class entertainment. Many thanks to Bryan and the Handbell Ringers. Many thanks to Ann and Dan and the Voices Ensemble.

*Chris Willis / Bryan Clarke*

